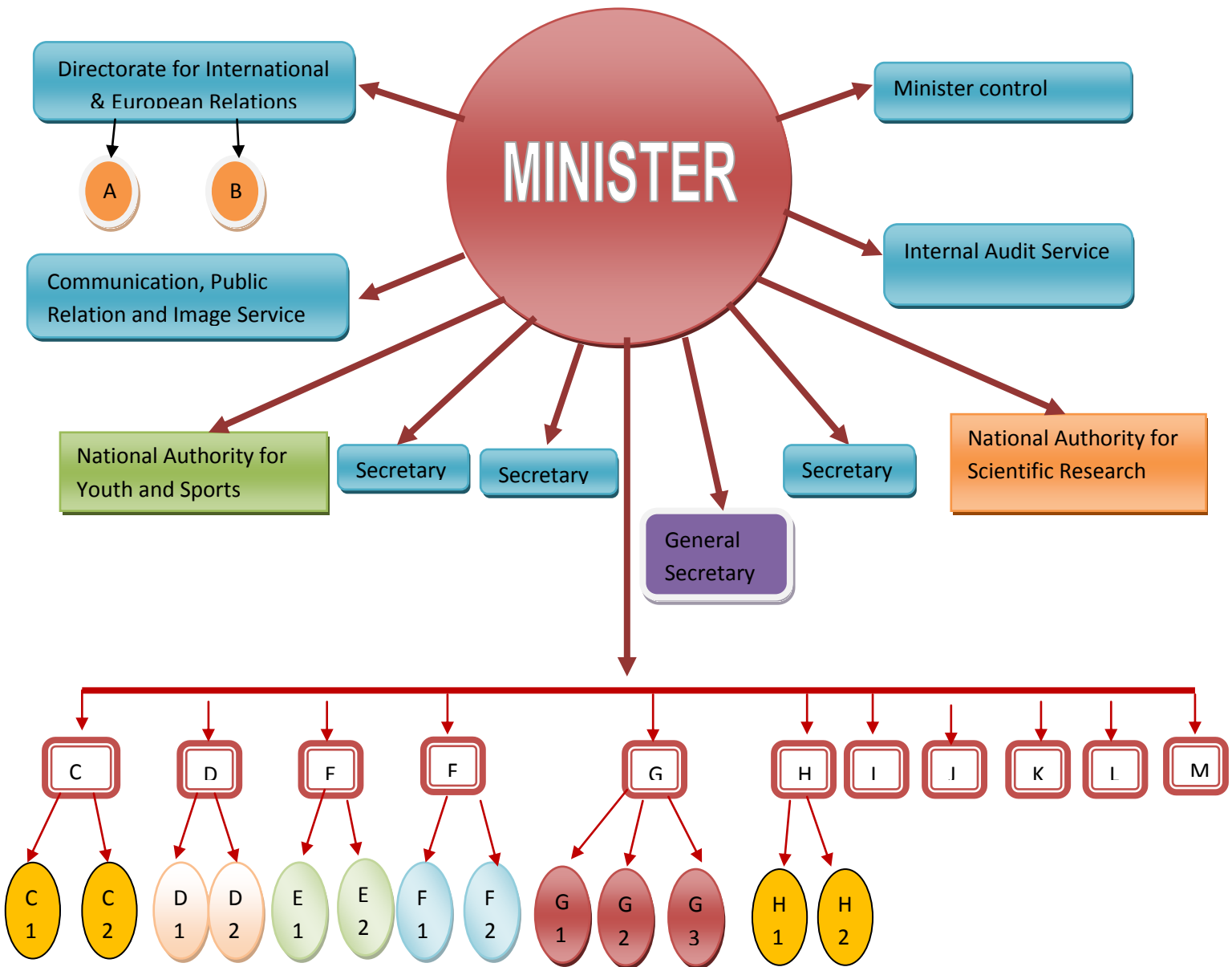


Organisation of Ministry of National Education - MEN



- A – European Affairs Department
- B – International partnership and Romanians from everywhere direction
- C - General higher education, validation and recognition of studies and diplomas direction
 - C1- Direction of institutional financing strategies
 - C2- Direction for equivalence and recognition of diplomas
- D - GD Education and lifelong learning
 - D1- Direction for school inspection
 - D2- Direction for lifelong learning and programs
- E – GD general management, human resources and school networks
 - E1- Direction of human resources policies and school network
 - E2- Continuous training direction of education
- F – GD of education in minority languages, the relationship with Parliament and social partners
 - F1- Direction for minority
 - F2- Direction for relationship with Parliament and social partners
- G – GD economic, financial, human resources
 - G1- Direction for human resources
 - G2- Finance Budget Department
 - G3- Administrative direction
- H - Legal Affairs Directorate

H1- Direction for contentious approval documents

H2- Public political service

I - Direction for heritage modernization, computerization and investment

J - Project management unit with external financing

K - Project management unit for modernization of school

L - OI POSDRU

M - Implementation unit projects financed from structural funds